

Impact Report

2024-2025



South
Central
LAMP

EMPOWERING FAMILIES THROUGH EDUCATION SINCE 1993



“ At South Central LAMP, I was given the tools to guide my children. I was taught that I have a voice — something that gave me self-confidence and a sense of my own worth as a woman. I have used that voice to advocate for my children regarding their education and health, and to navigate my way within the community.”

— GRACIELA G.

OUR HISTORY

South Central Los Angeles Ministry Project (South Central LAMP) was founded in response to the 1992 civil unrest in Los Angeles by a collaboration of eight congregations of Catholic sisters. When they asked how they could better support the community, the sisters heard a strong desire from mothers to enhance their parenting skills, improve their English literacy, and prepare their children for school and later success in life. Over the past 30 years, our family-centered programming has expanded to include accredited early childhood education, comprehensive ESL and parenting programs, as well as health, advocacy, and community support services.

FOUNDING & SUPPORTING CONGREGATIONS

Daughters of Charity
Religious of the Sacred Heart of Mary
Sisters of Notre Dame
Sisters of Providence
Sisters of St. Joseph of Carondelet
Sisters of St. Joseph of Orange
Sisters of St. Louis
Sisters of Social Service
Sisters of the Holy Faith – California Province
Sisters of the Holy Family
Sisters of the Holy Names of Jesus and Mary
Society of the Holy Child Jesus

Mission Statement

South Central LAMP's mission is to provide programs that **empower women and their families** to reach their full potential in a supportive, nurturing environment through **education**, building **self-esteem**, and strengthening **community relationships**.

Who We Serve

Many families in South Central Los Angeles face daily barriers that push them into cycles of stress and isolation: limited income, language barriers, and generational trauma. South Central LAMP's integrated approach tackles the challenges our families face head-on, helping them build stability and planting seeds for generational change. All our programs are **free of charge**.



56%

OF THE FAMILIES WE SERVE LIVE IN **PERSISTENT POVERTY**

19%

OF THE MOTHERS IN OUR FAMILY LITERACY PROGRAM **COMPLETED HIGH SCHOOL**

100%

OF OUR FAMILIES SPEAK A **LANGUAGE OTHER THAN ENGLISH** AT HOME

Core Values



1

Empower women to advocate for themselves, their children and families

2

Provide **English language tools** to effectively integrate into the community

3

Instill **positive parent and child interaction**

4

Promote **early literacy and school readiness skills** for children and their families

5

Maximize use of **community resources** that support South Central LAMP's mission



MESSAGE FROM THE

Executive Director

Dear South Central LAMP Community,

I'm so excited to share our 2024-2025 Impact Report with you. As you read through these pages, please remember that the numbers here represent real women and children striving to build better futures for themselves while navigating systems that too often villainize their very existence.



Many of the women who come to South Central LAMP have completed only a fifth-grade education, while also facing barriers created by poverty, discrimination, and limited access to opportunity. Yet, there is hope. Despite the systemic inequities they face every day, these women wake each morning and choose hope over hate, hope over complacency, and hope over statistics.

Research consistently shows that a parent's level of education is one of the strongest predictors of a child's academic achievement. But it is not the sole predictor of success. Studies also show that parent involvement plays a critical role in a child's educational and emotional development. At South Central LAMP, we work to strengthen that involvement by supporting women as they reflect on the values and experiences they grew up with and helping them discern whether those beliefs support the kind of parents, advocates, and community leaders they want to become for their children. The Strengthening Families Protective Factors approach we use supports women and children in ways that can truly change the trajectory of their lives.

Many of the most meaningful changes that happen at South Central LAMP cannot fully be captured through data alone. As you review this report, remember that even small changes can have a profound impact on a person's life. Change does not always happen loudly or quickly. Like water shaping rock over time, transformation happens through persistence, care, and opportunity.

As one graduating mother shared, "I don't know what my life would be like if I hadn't come to this program. South Central LAMP is more than a school; it is a second home. It helped me break the chains of difficulties that were preventing me from helping my family... I also learned to fight for what I want. When you have the right tools, you can achieve whatever you set your mind to."

That is the heart of South Central LAMP's work: providing women and families with the tools, support, and opportunities they need to thrive. By recognizing the gaps that exist in our community and responding with evidence-based programs, we know that small changes can lead to transformative opportunities—not only for one woman or one child, but for generations to come.

With hope and gratitude,

Diana Pinto

Strengthening Families, Strengthening Communities

The impact of our programs goes beyond the classroom to build family stability and community connections.

How We Serve

Education Programs



PARENTING PROGRAMS

that empower women to advocate for themselves, their children, and their families



ENGLISH AS A SECOND LANGUAGE PROGRAMS

that provide language skills for effective integration into the community



EARLY CHILDHOOD EDUCATION PROGRAMS

that combine early literacy and school-readiness skills with parent participation

Support Services



FAMILY ADVOCACY SUPPORT

including biannual home visits to maximize access to community resources



HEALTH & WELLNESS SUPPORT

with on-site health clinics run by QueensCare Health & Faith Partnership and ongoing workshops

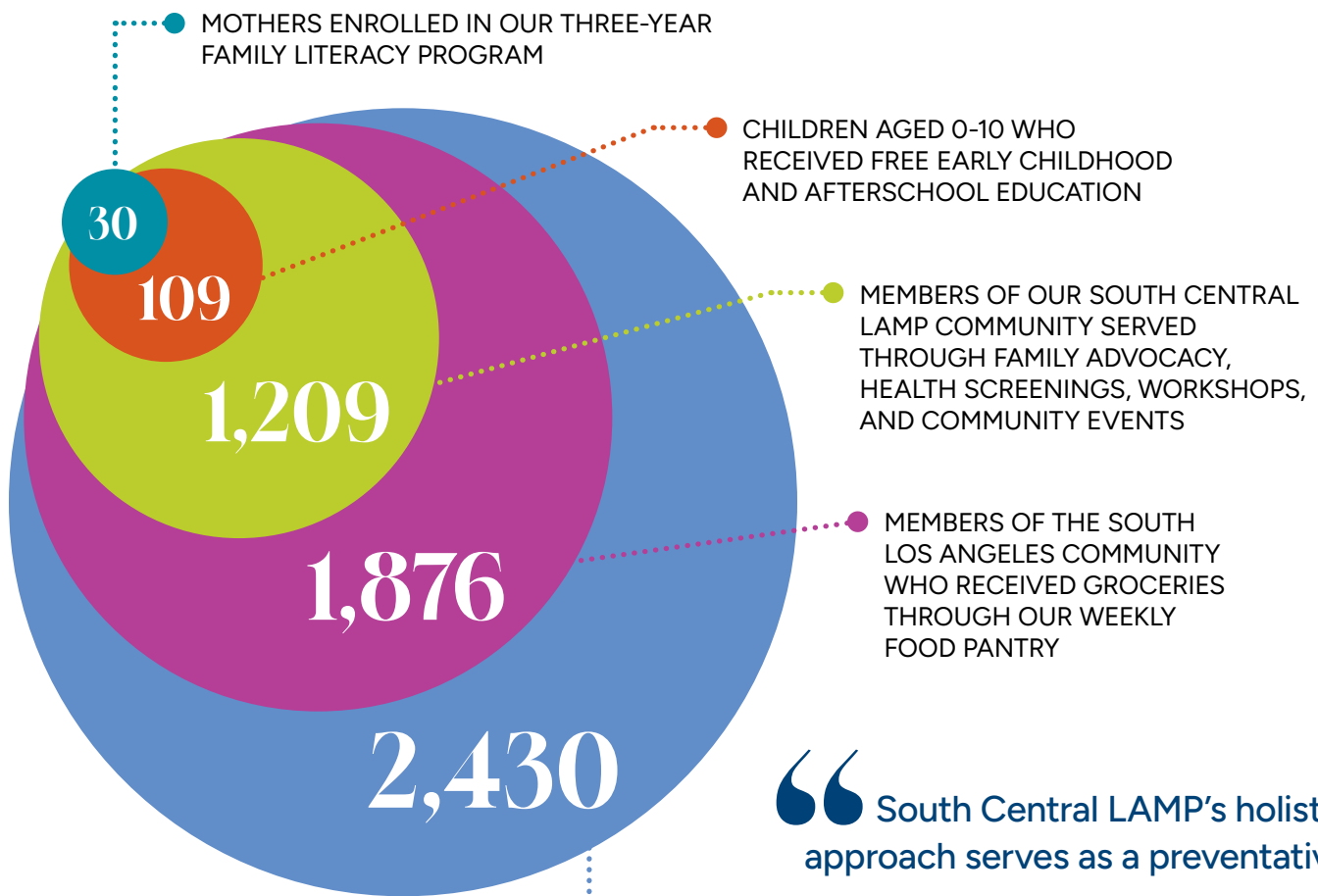


COMMUNITY FOOD DISTRIBUTION PROGRAM

run by South Central LAMP graduates in partnership with St. Francis Center

Small Team, Big Impact

As a small organization with limited resources, we harness our creativity and determination to find ways to offer new services to the mothers and children we work with, and to open our embrace to include more families in need across South Los Angeles. In 2024-2025, our impact extended from the 30 mothers enrolled in our core Family Literacy Program to touch more than 2,400 people. We continue to be filled with hope and optimism as the ripple effect of our family-focused community programs transforms peoples' lives.



“South Central LAMP’s holistic approach serves as a preventative measure — our programs work together as a powerful form of early intervention. These services significantly reduce the risk of families entering the child welfare system, experiencing homelessness, or facing food insecurity.”
 — DIANA PINTO, EXECUTIVE DIRECTOR

Building Strong Foundations

Our evidence-based early childhood programs, tailored to support dual language learners, set kids up to thrive. Regular, interactive family literacy activities boost learning and connection.

Early Childhood Education



INFANT & TODDLER EARLY CHILDHOOD EDUCATION

AGES 0-3

A nurturing learning environment for the children of the mothers enrolled in our three-year Family Literacy Program.



CALIFORNIA STATE PRESCHOOL PROGRAM

AGES 3-5

A state-accredited preschool program with a specialized focus on school readiness for dual language learners.

Afterschool Learning



EXPANDED LEARNING (EXPL) PROGRAM

AGES 5-10

A comprehensive program that includes homework help, coding, and other hands-on STEAM activities.



FACTS & IMPACT

8:1

STUDENT-TEACHER RATIO ENSURES **PERSONALIZED LEARNING**

100%

OF OUR **TEACHERS ARE BILINGUAL** AND TRAINED TO SUPPORT DUAL LANGUAGE ACQUISITION

90%

OF **BRAIN DEVELOPMENT** OCCURS FROM AGES 0-5



At school, I have been asked what afterschool program my daughter is enrolled in because [EXPL] is helping her to improve academically.”

— ELVIA C.

Learning and Growing Together



INTERACTIVE PARENT-CHILD ACTIVITIES

The mothers in our Family Literacy Program and Afterschool Learning (EXPL) Program participate with their children in a variety

of hands-on literacy and STEAM activities designed to reinforce learning and strengthen their relationships.



CAMP LAMP SUMMER FAMILY ENRICHMENT

This annual summer event is a joyful week filled with fun, real-world discovery. This year, we hosted an on-site "field trip" featuring The Reptile Guy, and our families also enjoyed a day

out at Adventure City in Anaheim, as well as a visit to the Craft Contemporary Museum for some hands-on creativity. We extend our heartfelt thanks to the Friars Charitable Foundation for their generous sponsorship of Camp LAMP.



3

HOURS PER WEEK DEVOTED TO **PARENT-CHILD LITERACY ACTIVITIES**

RESEARCH SHOWS...

CHILDREN WHO PARTICIPATE IN HIGH-QUALITY EARLY CHILDHOOD PROGRAMS ARE MORE LIKELY TO **EXCEL ACADEMICALLY, ACHIEVE HIGHER INCOMES AND HAVE BETTER HEALTH AS ADULTS, AND HAVE LESS INVOLVEMENT IN CRIME.**



Kindergarten Readiness

The Desired Results Developmental Profile (DRDP) is a state assessment that measures progress on a developmental continuum from early infancy to kindergarten entry. Across nearly all domains, our preschoolers demonstrated strong progress toward the top four developmental levels, which indicates that, despite some significant environmental challenges, the majority of our students are almost ready or completely ready for kindergarten.

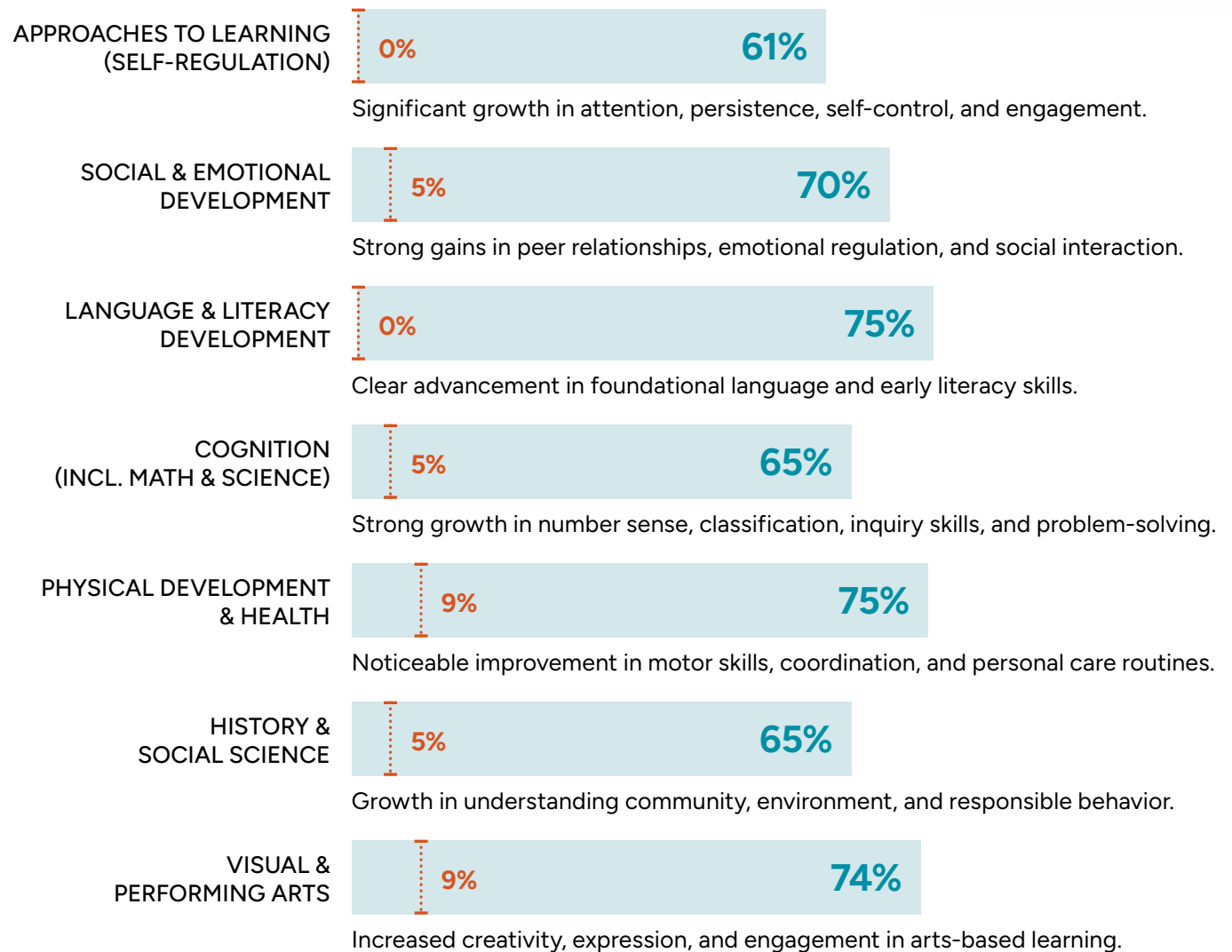
2024-2025 DRDP RESULTS (FALL 2024 VS. SPRING 2025)

Percentage of preschoolers who scored at the **top four DRDP developmental levels** (indicating kindergarten readiness) in each domain at the beginning and end of the academic year.



RESEARCH SHOWS...

PRESCHOOLERS WHO SCORE WELL IN KINDERGARTEN READINESS ASSESSMENTS **PERFORM BETTER ON LATER MEASURES OF ACADEMIC SUCCESS**, INCLUDING TEST SCORES, GPA, AND HIGH SCHOOL GRADUATION RATES.



Personalized Support

We work hard to address the unique needs of the children in our community to ensure they are getting the support they need to learn and grow. These services are provided at no charge:

DEVELOPMENTAL REFERRALS

During the 2024-2025 academic year, we referred 16% of our preschool students for evaluation and specialized support for learning disabilities or challenges, which is 2.5 times the national average referral rate of 6.4%.

HEALTHCARE SCREENINGS

Our alliance with QueensCare Health & Faith Partnership helps us to monitor our students' physical wellbeing and provide referrals to follow-up care to address issues that affect learning and development.

FAMILY ADVOCATE HOME VISITS

These biannual visits enable us to get a full picture of each child's living environment and observe the home and family dynamics that may impact their classroom progress.



16%
OF PRESCHOOLERS
REFERRED FOR
SUPPORT WITH
LEARNING OR
DEVELOPMENTAL
CHALLENGES

93
FREE VISION
& HEARING
SCREENINGS,
WITH 32 CHILDREN
REFERRED TO
HEALTHCARE
PROVIDERS FOR
FURTHER TESTING

6
PAIRS OF GLASSES
DISPENSED TO
STUDENTS FREE OF
CHARGE

Empowering Mothers

We help women build better futures for their families through evidence-based education programs and practical support.

Family Literacy Program

South Central LAMP's three-year Family Literacy Program offers learning experiences and support services that are the catalyst for life-changing growth. Parents leave with tools they can use every day—a mother who reads with her child for the first time in English, a parent who chooses conversation over conflict, a caregiver who knows exactly where to turn when rent is due or food runs short. These moments add up to healthier childhoods, stronger family bonds, and communities where mothers feel seen, capable, and prepared to shape their own futures.

Our Family Literacy Program offers:

- English as a Second Language (ESL) Classes
- Parent-Child Interactive Literacy Activities
- Parenting Classes
- Family Advocacy Support
- On-site Early Childhood Education (ages 0-5)

Mothers also have access to regular health clinics, workshops and community events, and a weekly food distribution program. All these programs are offered **at no charge**.

ENGLISH AS A SECOND LANGUAGE (ESL)

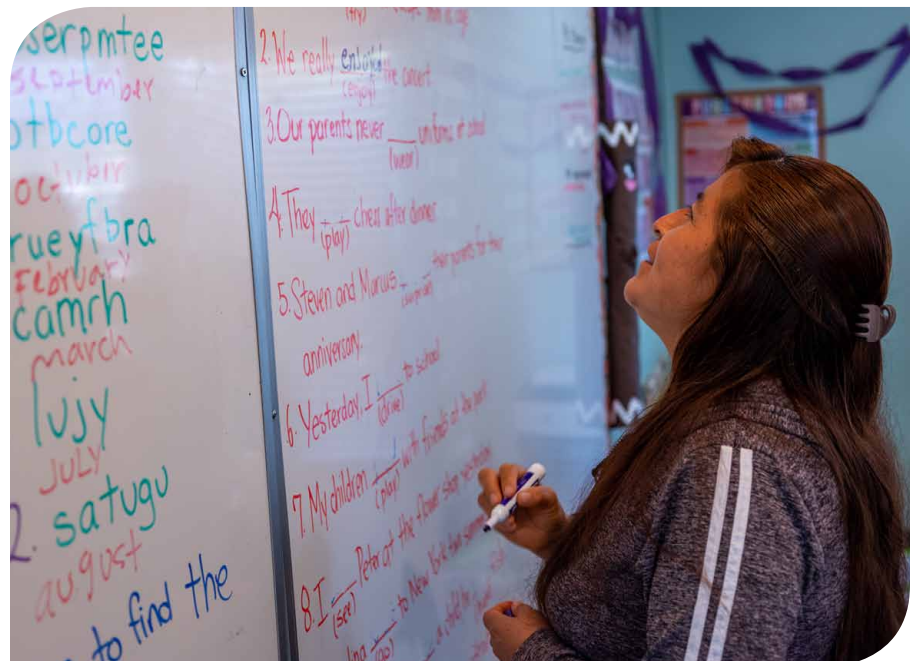
For immigrant parents, English literacy removes barriers and strengthens entire families. Our ESL courses empower mothers to fully participate in society and advocate for their children. This year, our mothers have reported **that they are able to understand and speak English more confidently** in settings such as the clinic, shopping, school, and work.



88%
ATTENDANCE RATE

1,200
ESL LEARNING HOURS
OVER THE 3-YEAR PROGRAM

92%
OF MOTHERS
IMPROVED THEIR ENGLISH SKILLS



PARENT-CHILD INTERACTIVE LITERACY ACTIVITIES

Through storytelling, arts and crafts, and play-based activities, these sessions strengthen the parent-child bond while promoting the child's long-term cognitive, social, and emotional development.

Mothers report that they are **inspired to share more hands-on literacy experiences** with their children at home. Pre- and post-program surveys in 2024-2025 showed increased engagement (three or more times per week) in activities that support their child's development, including:

- talking about letters of the alphabet (39% → 61%)
- asking predictive questions while reading (29% → 50%)
- encouraging use of crayons or other writing tools (68% → 89%).

Mothers also reported **more involvement in their children's education and community**, which studies have shown directly increases high school graduation rates. More mothers visited the library monthly (21% → 50%), regularly communicated with their child's teacher (36% → 57%), attended school events (46% → 79%), and participated in parent meetings such as PTA (14% → 36%).

PARENTING CLASSES

Our comprehensive parenting classes empower mothers with essential skills that help break cycles of physical discipline, build trust with children, and set boundaries with empathy, all foundational shifts that shape childhood outcomes.

This year, our mothers showed **significant gains in two key areas** measured by the Adult Adolescent Parenting Inventory (AAPI) survey: Developing Empathy (↑32%) and Discipline with Dignity (↑51%). These increases reflect meaningful shifts in parenting beliefs that are associated with a reduced risk of child abuse and neglect.

“ Parenting classes have had the biggest impact on me. They have taught me the importance of communication with my children, the importance of playing, and incorporating literacy. It has had a big impact on my relationship with my children... we have grown a lot together.”

— MARIA Z.



276

HOURS OF PARENT-CHILD INTERACTIVE LITERACY ACTIVITIES OVER THE 3-YEAR PROGRAM

RESEARCH SHOWS...

CHILDREN IN FAMILY LITERACY PROGRAMS HAVE **HIGHER ATTENDANCE RATES AND PERFORM BETTER ON STATE STANDARDIZED ASSESSMENTS** IN ELEMENTARY SCHOOL THAN THEIR PEERS.

550

HOURS OF PARENTING CLASSES OVER THE 3-YEAR PROGRAM

FAMILY ADVOCACY

Mothers in the Family Literacy Program benefit from personalized assistance, guidance, and referrals to external services through our dedicated in-house family advocate. We ensure that everyone has access to the support they need, from housing and health services to child development resources and legal assistance.

“ Before LAMP, I didn't know how systems work here in California, but through the program I was able to... learn to navigate the processes and obtain resources. It has helped me become more confident when opportunities come... it has been of great help to myself and my family.”

— MEICY C.

Key Impacts

Our Family Literacy Program offers a wraparound experience that empowers women to build a better future for their children. Mothers gain language skills to advocate for their families, learn positive parenting strategies to break harmful cycles, and connect with others who share their struggles and triumphs. The families supported by South Central LAMP are growing stronger, more connected, and more resilient, with practical tools to manage stress, build confidence, and contribute to community well-being.



116

FAMILY ADVOCATE REFERRALS MADE TO OUTSIDE AGENCIES AND RESOURCES

RESULTS FROM THE END-OF-YEAR PROTECTIVE FACTORS SURVEY SHOW MEANINGFUL GROWTH ACROSS KEY AREAS THAT ARE STRONGLY LINKED TO **CHILD SAFETY, FAMILY STABILITY, AND LONG-TERM WELL-BEING:**

+ 11%

INCREASE IN SOCIAL CONNECTIONS: FAMILIES HAVE **STRONGER NETWORKS** AND KNOW WHO TO TURN TO IN A CRISIS

+ 10%

INCREASE IN NURTURING & ATTACHMENT: CAREGIVERS REPORT **MORE CONNECTED RELATIONSHIPS** WITH CHILDREN

+ 8%

INCREASE IN CONCRETE SUPPORTS: PARENTS FEEL **MORE CONFIDENT ACCESSING FOOD, HOUSING, AND HEALTHCARE**

Community Partnerships and Support Services

As a community-driven organization, we are dedicated to finding ways to support more families in need across South Central Los Angeles. We are proud of these partnerships and projects:

COMMUNITY FOOD PANTRY

We partner with St. Francis Center to provide a food pantry service that serves hundreds of low-income households in our community. This weekly event is operated by South Central LAMP graduates, who volunteer to organize and distribute the donations of fresh produce, baked goods, canned goods, and other items. Additional volunteers and donations are always welcome!



ON-SITE HEALTH CLINIC

Through our alliance with QueensCare Health & Faith Partnership, we provide accessible healthcare services at no cost. A registered nurse and community health worker are available for walk-in consultations twice a month, and also offer immunizations and screenings, as well as health education and counseling. The QueensCare nurse also plays a crucial role in referring families to other no-cost or low-cost resources for follow-up or specialist care.



KINSHIP SUPPORT GROUP

South Central LAMP collaborates with Partners for Children South Los Angeles to host a bi-monthly Spanish kinship support group. These sessions serve as a vital resource for caregivers who are raising children in kinship care. The group offers a supportive community as well as access to valuable information, resources, and services.



Partners for Children South L.A.

Working together for young children and families

PARENTING WORKSHOPS

We offer free community parenting workshops that provide practical insights, strategies, and support. This year, topics included developmental milestones, kindergarten preparation, mental health, community advocacy and more.



435

HOUSEHOLDS RECEIVED FREE GROCERIES FROM OUR WEEKLY FOOD PANTRY

128

FREE HEALTHCARE CONSULTATIONS

208

VITAL HEALTH SCREENINGS COMPLETED, INCLUDING BLOOD PRESSURE, GLUCOSE AND CHOLESTEROL

52

REFERRALS TO MEDICAL SPECIALISTS AND HEALTHCARE RESOURCES

MESSAGE FROM THE

Board of Trustees Chair

Dear Friends of South Central LAMP,

On behalf of the Board of Trustees, I am honored to share our deepest gratitude for your partnership and support during the past fiscal year. Because of you, South Central LAMP continues to be a place of hope, dignity, and opportunity for women and families in South Central Los Angeles.

Despite facing increased hardship and instability this year, families found strength and support through South Central LAMP—experiencing growth, healing, and renewed confidence along the way. Mothers strengthened their English and parenting skills, children reached important developmental milestones, and families accessed vital resources including food, diapers, advocacy, and wellness support.

Your generosity made this impact possible. It ensured that our Family Literacy Program remained a safe and nurturing space where women are empowered as their children's first teachers and strongest advocates. It also sustained our wraparound services that recognize families not only as learners, but as whole people deserving of care, respect, and opportunity.

As Board Chair, I continue to be inspired by the resilience of the families we serve and by the dedication of our staff and community partners. Together, we are not only responding to immediate needs—we are investing in long-term change and breaking cycles of generational hardship through education, compassion, and collective action.

Thank you for standing with South Central LAMP and believing in the potential of every woman and child we serve. Your support strengthens our mission and fuels a future filled with possibility. We are deeply grateful for your trust and partnership, and we look forward to the year ahead with hope and determination.

With heartfelt appreciation,

Daniel Bir

BOARD OF TRUSTEES 2024-2025

OFFICERS

BOARD CHAIR

Daniel W. Bir
PRINCIPAL, POLSINELLI LLP

VICE CHAIR

Mary Fitzpatrick
REPRESENTATIVE FOR THE SOCIETY
OF THE HOLY CHILD JESUS

SECRETARY

Cecilia Estrada
REPRESENTATIVE FOR THE SISTERS
OF HOLY NAMES OF JESUS AND MARY

TREASURER

Teresita R. Ruiz
RELATIONSHIP MANAGER, VP,
FLAGSTAR BANK

MEMBERS

Mary Dolmage
RETIRED TEACHER

Sr. Mary Genino, RSHM
RELIGIOUS SACRED HEART OF MARY

Margaret Graf
GENERAL COUNSEL ARCHDIOCESE
OF LOS ANGELES

Mary Mansell
RETIRED SCHOOL ADMINISTRATOR

Sr. Lisa Megaffin, SND
SISTERS OF NOTRE DAME

Sr. Maureen O'Connor, CSJ
SISTERS OF ST. JOSEPH OF
CARONDELET

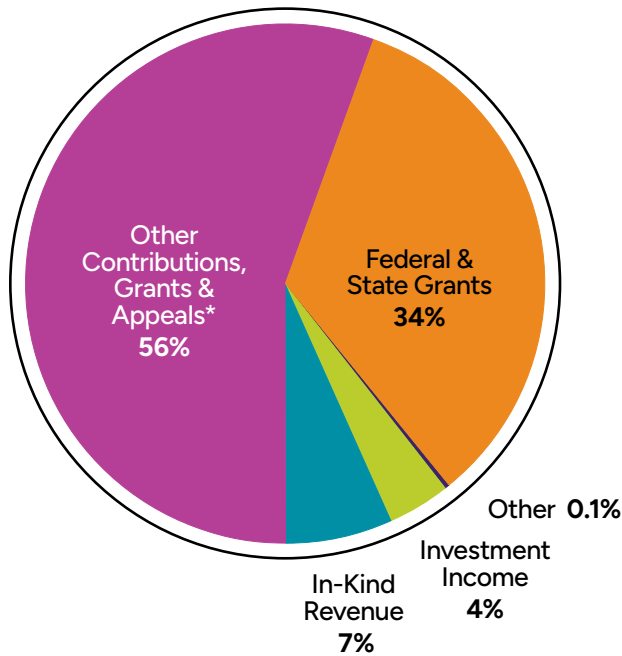
Maria Elena Perales
JUSTICE COORDINATOR, SISTERS OF
ST. JOSEPH OF ORANGE

Christina Yamasaki
SPANISH TEACHER AND CAMPUS
MINISTRY ASSOCIATE, ST. MARY'S
ACADEMY

Kayla Yokoyama Dodge
CO-FOUNDER, E-COMMERCE
BUSINESS

Year in Review 2024-2025

TOTAL REVENUE | \$2,186,694

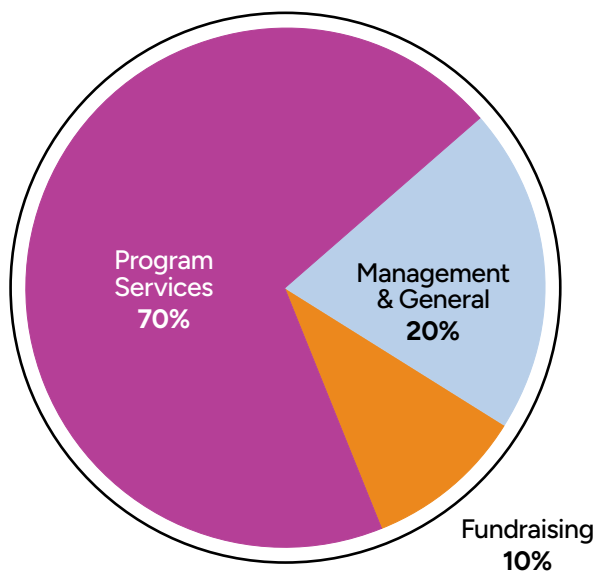


Revenue

Contributions, Grants & Appeals*	\$1,216,532
Federal & State Grants	\$738,632
In-Kind Revenue	\$143,390
Investment Income	\$85,340
Other	\$2,800
TOTAL REVENUE	\$2,186,694

* includes non-government grant revenue and fundraising appeals

TOTAL EXPENSES | \$2,309,902



Expenses

Program Services	\$1,611,515
Management & General	\$473,710
Fundraising	\$224,677
TOTAL EXPENSES	\$2,309,902

OUR LEGAL TITLE:

South Central Los Angeles Ministry Project, Inc.

OUR 501(C)3 NON-PROFIT TAX ID:

95-4571388

In Gratitude 2024-2025

We extend heartfelt gratitude to our supporters, partners, and volunteers.

SUPPORTING FOUNDATIONS

The Carl and Roberta Deutsch Foundation
Carrie Estelle Doheny Foundation
Catholic Community Foundation
Conrad N. Hilton Foundation
Crail-Johnson
Dan Murphy Foundation
Dollar General Literacy Foundation
Durfee Foundation
Friars Charitable Foundation
The Green Foundation
Magistro Foundation
Montobbio Benson Gift Fund
The Ralph M. Parsons Foundation
The Thomas and Dorothy Leavey Foundation
QueensCare
U.S. Department of Health and Human Services
William H. Hannon Foundation

COMMUNITY PARTNERS

Cantwell Sacred Heart of Mary High School
Children's Dental Fun Zone
Christ Child Society
Clarion Partners
Claris Health
Crystal Stairs/QSLA
LAPD Newton Division
LAPD SWAT
Los Angeles County Office of Education
Loyola Marymount University
Mayfield Junior School
Mayfield Senior School
Notre Dame Academy High School
Ramona Convent
St. Francis Center
St. Martin of Tours Church
St. Martin of Tours School
St. Maximilian Kolbe/Project Response
QueensCare Health Alliance
Zapata King Neighborhood Council

Holiday Toy Drive

We are grateful to the 18 individuals and five community partners who donated toys and treats to brighten the holidays for the families in our community. Special thanks to our volunteer elves for their gift wrapping efforts!

SUPPORTING CORPORATIONS

Anonymous
California Snack Foods
Children's Hospital Los Angeles
Dollar Tree
Food 4 Less
GEARYS Beverly Hills
McKool Smith
Northgate Gonzalez Markets
Polsinelli
PricewaterhouseCoopers, LLP
Provencio Advisory Services Inc
Ross Dress for Less
SEMPRA Energy Foundation
Tampico Spice Co., Inc.
Walmart

For information on donation and volunteer opportunities, please contact **Nicole Burcham**, Development Director, at (323) 234-1471 ext. 101 or nburcham@southcentrallamp.org.

Thanksgiving Food Drive

Thank you to our five community partners, who donated an abundance of food items and grocery vouchers, and to our volunteers for helping to sort and package the bags for distribution.



90
FAMILIES
RECEIVED
THANKSGIVING
GROCERIES



200
CHILDREN
RECEIVED
WRAPPED
HOLIDAY GIFTS

2025 Empowerment Awards

Our community gathered in June 2025 for our annual Empowerment Awards to honor these individuals and organizations for their extraordinary contributions to South Central LAMP.



Marilyn Stambler (left) with Executive Director Diana Pinto

PERSON OF THE YEAR AWARD

Marilyn Stambler PRESIDENT OF FRIARS CHARITABLE FOUNDATION

Marilyn Stambler has long championed South Central LAMP’s mission to empower immigrant women and their children. Her advocacy and support have played a pivotal role in sustaining Camp LAMP, our free summer enrichment program. We celebrate Marilyn as a champion of children, families, and the belief that every person — regardless of their background — deserves the opportunity to flourish.



Valerie Woodard (left) with Sr. Cathy Garcia, RSHM and Diana Pinto

OUTSTANDING COMMUNITY PARTNER AWARD

Valerie Woodard TEACHER, ST. MARTIN OF TOURS SCHOOL

Valerie Woodard is a beloved kindergarten teacher and a passionate community advocate who believes deeply in teaching her students the value of empathy, generosity, and service to others. Valerie has led biannual diaper and back-to-school drives with South Central LAMP for over 15 years, engaging her kindergarteners and their families in hands-on philanthropy. Valerie is a shining example of what it means to lead with heart, integrity, and purpose.



Maria Alcalde (left) with Diana Pinto and Fr. Paul Fitzpatrick

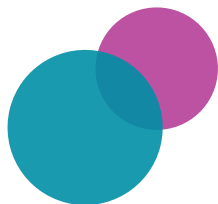
OUTSTANDING COMMUNITY PARTNER AWARD

St. Martin of Tours Parish

Under the compassionate leadership of Fr. Paul Fitzpatrick, St. Martin of Tours Parish has become a beacon of generosity through its annual diaper drives in support of South Central LAMP mothers. Spearheaded by Maria Alcalde, parishioners come together to collect diapers for the mothers and young children in our programs. What began as a simple act of charity has grown into a meaningful tradition that exemplifies the parish’s enduring commitment to serving those in need.

“At the Friars Charitable Foundation, we’re proud to support South Central LAMP. Through the integration of the arts, education and social services, children, mothers and families thrive. I’m proud to be one of South Central LAMP’s champions.”

— MARILYN STAMBLER, SOUTH CENTRAL LAMP PERSON OF THE YEAR 2025





GO TEAM! In 2024, our team was honored with a grant through the Durfee Foundation's Lark Awards, which are designed to support the collective care and renewal of staff at small non-profit organizations with deep roots in their communities. We are grateful for the opportunity to recognize and reward our incredible staff for their dedicated service.

ADMINISTRATION

EXECUTIVE DIRECTOR
Diana Z. Pinto

DEVELOPMENT DIRECTOR
Nicole Burcham

CHILDREN'S EDUCATION & PROGRAMS MANAGER
Samira Alvarez

ADULT EDUCATION & PROGRAMS MANAGER
Jessie Hernandez

OFFICE MANAGER
Luz Saucedo

PROGRAM STAFF

ECE SITE SUPERVISOR & EXPL AFTERSCHOOL COORDINATOR
Ilce Moreno

CENTER MANAGER
Maria Cabrera

ECE & EXPL TEACHING STAFF
Brandon Bautista
Carolina Bautista
Randy Bautista
Marijose Castillo
Cesar Falcon
Melissa Franquez
Jackelin Frias
Vanessa Jimenez
Mariela Lopez
Erika Samaniego
Adan Sanchez
Maria Solorzano
Maria Soriano

ESL COORDINATOR & INSTRUCTOR
Sr. Cathy Garcia, RSHM

ESL INSTRUCTORS
Hannah Han
Derek Sijder

FAMILY ADVOCATE
Yaqueline Sucup

OFFICE & DEVELOPMENT STAFF

OFFICE ASSISTANT
Celeste Jimenez

DEVELOPMENT ASSOCIATE
Audrey Rudolph

CONTACT

Diana Z. Pinto EXECUTIVE DIRECTOR
(323) 234-1471 ext. 108
dpinto@southcentrallamp.org

Nicole Burcham DEVELOPMENT DIRECTOR
(323) 234-1471 ext. 101
nburcham@southcentrallamp.org



South
Central
LAMP

Empowering families since 1993

